



## FS-TSAI-1620m Fail-safe 0(4)-20 mA analog input FTA (16 channels)

### Description

The field termination assembly module FS-TSAI-1620m is the interface between field components (sensors, etc.) and the fail-safe high-density analog input module 10105/2/1 in the FSC system. It can be used for interfacing signals from Class I, Division 2 Hazardous Locations.

The FS-TSAI-1620m module has sixteen analog input channels, which may be used for both safety-related and non-safety-related applications. These sixteen channels (separated into two groups of eight channels with common 0 V) are connected via a system interconnection cable (SIC), which is plugged into the SIC connector on the FTA module.

The FTA module has a universal snap-in facility for standard DIN EN rails, and screw terminals for connection of power supply, ground and field wiring.

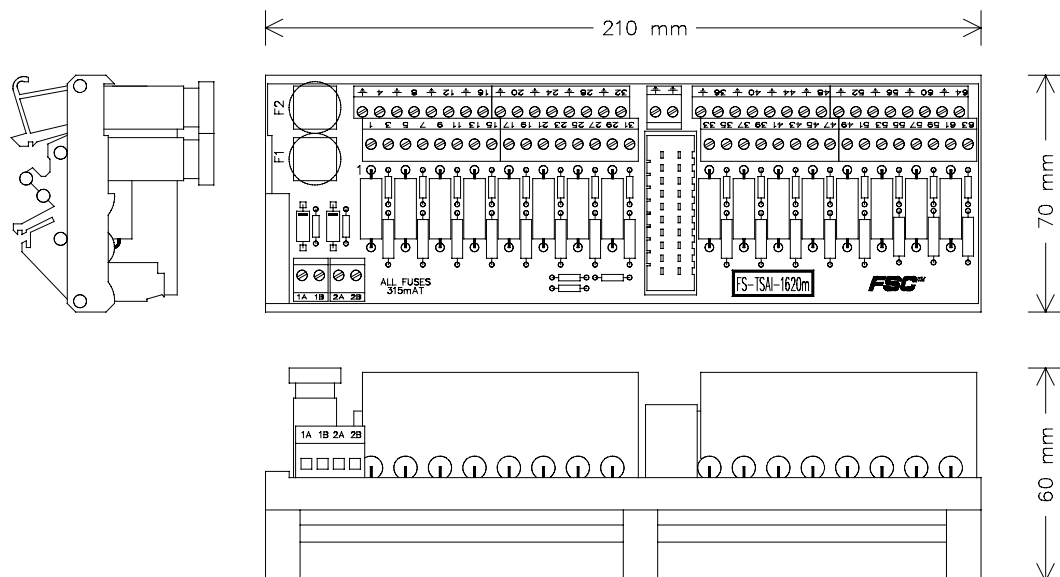


Figure 1 Mechanical layout





## Transmitter voltage

Figure 3 below shows the available transmitter voltage for passive transmitters.

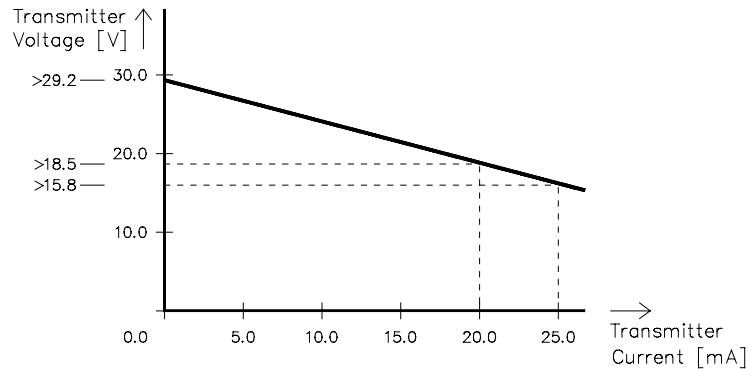


Figure 3 Transmitter voltage for passive transmitters

## External power

If all inputs are active, no external power is required.

For loops, which contain passive transmitters, analog process data is only available if the supply voltage to the electronics is guaranteed. The high-density analog input concept (using FS-TSAI-1620m / FS-TPSU-2430 modules) offers full monitoring of power that is provided externally. If DC/DC converter modules FS-TPSU-2430 are used, even redundant power supplies are covered.

Redundant external power can be connected to the FS-TSAI-1620m module via two screw terminal pairs marked '1A', '1B', '2A' and '2B'. The external power supplies are de-coupled via diodes (see figure 4). The sixteen channels on the FTA module are divided into two groups of eight channels, with each group being protected by a 315 mA fuse. Single-channel errors (shorts from V+ to 0 V) cannot blow the group fuse.

---

### Note:

The 0 V connection of the external power is directly connected to the common 0 V of all sixteen analog inputs.

---

The FSC application software must monitor the external power voltage via the fail-safe high-density analog input module 10105/2/1 when safety-related analog input signals are connected to the FS-TSAI-1620m.

Figure 4 below shows the schematic diagram for power distribution with monitoring.

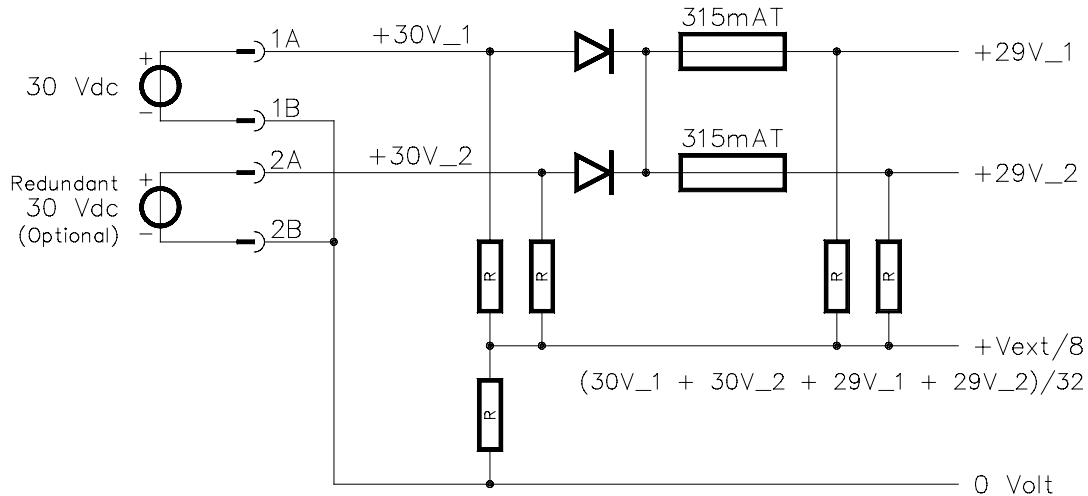


Figure 4 Schematic diagram for power distribution with monitoring

## Applications

For details on applications and connection options for the FS-TSAI-1620m module refer to the 'SIC to FTA applications' data sheet.

## Connections

### External power and ground

The redundant external supply voltage ( $V_{ext}$ ) and ground are connected to the following screw terminals (marked '1A', '1B', '2A', '2B' and '  ' on the FTA):

Screw terminal	Function
1A	30 Vdc $V_{ext}$ feeder 1
1B	0 Vdc $V_{ext}$ feeder 1
2A	30 Vdc $V_{ext}$ feeder 2
2B	0 Vdc $V_{ext}$ feeder 2
<u>  </u>	Ground connection
<u>  </u>	Ground connection

### Connections diagram

The FS-TSAI-1620m module has sixteen groups (= sixteen channels) of four screw terminals to provide optimum connection of field wiring, with a ground terminal per channel for screening of analog input cables. The screw terminals are numbered 1 to 64. The connections diagram of the FS-TSAI-1620m module is as follows:



## Connections diagram

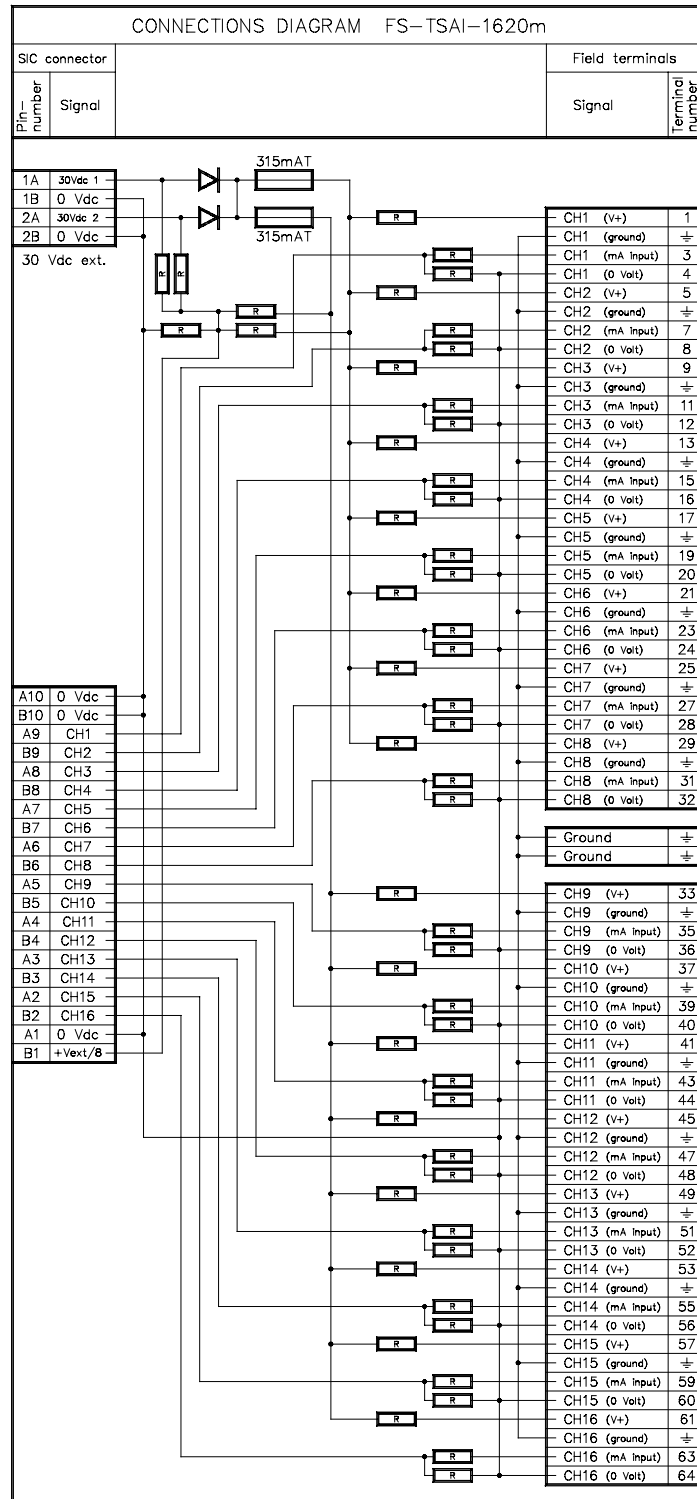


Figure 5 Connections diagram



## Technical data

The FS-TSAI-1620m module has the following specifications:

<b>General</b>	Type number:	FS-TSAI-1620m
	Approvals:	CE, TÜV, UL, FM**
<b>Input</b>	Number of input channels:	16 (2 groups of 8 with common 0 V)
	Power requirements:	30 Vdc external 3 mA (without input loop loads)
	Input current:	0 to 25 mA
	Input resistance:	250 Ohm ( $\pm 1\%$ )
<b>Output</b>	To passive transmitters (Vext):	
	– output resistance:	270 Ohm ( $\pm 5\%$ )
	– igniting current per channel:	< 120 mA at 30 Vdc
	To 10105/2/1 module:	
	– output voltage	0 to 4 Vdc
	– accuracy	0.1%
<b>Fuses</b>	Rating:	315 mAT (slow-acting)
	Dimensions:	5 x 20 mm (0.20 x 0.79 in)
<b>Physical</b>	Module dimensions:	210 x 70 x 60 mm (L x W x H) 8.26 x 2.76 x 2.36 in (L x W x H)
	DIN EN rails:	TS32 / TS35 x 7.5
	Used rail length:	211 mm (8.30 in)
<b>Termination</b>	Screw terminals:	
	– max. wire diameter	2.5 mm <sup>2</sup> (AWG 14)
	– strip length	7 mm (0.28 in)
	– tightening torque	0.5 Nm (0.37 ft-lb)
<b>Field signal specifications</b>	HYDROGEN (Group A & B):	
	– max. loop inductance	6 mH
	– max. loop capacitance	0.25 $\mu$ F
<b>For non-incendive</b>	NON-HYDROGEN (Group C & D):	
<b>Field circuits, Class1</b>	– max. loop inductance	20 mH
<b>Division 2</b>	– max. loop capacitance	5 $\mu$ F

\*\* See datasheet 10105/2/1