

**PRODUCT SAFETY ADVISORY****Notice of Potential Unsafe Condition**

Rockwell Automation issues a Product Safety Advisory when it identifies a product(s) anomaly that may potentially cause harm to personnel, capital equipment loss or environmental damage. Immediate action is required as identified below.

## **T8090 AADvance-Trusted SIS Workstation Software (SISW)- Peer-to-Peer digital I/O board when used with Trusted Controllers the Fail-Safe Value parameter is always True**

Reference: 2021-06-001

Date: June 2021

This Product Safety Advisory informs you of a potential anomaly that exists with the T8017 Enhanced Peer to Peer DXPDI128 and DXPDI16 digital input boards, when applied using the T8090 AADvance®-Trusted® SIS Workstation Software (SISW) and deployed in a Trusted System.

NOTE: If you are using Enhanced peer to peer with AADvance controllers you are NOT affected by this Advisory

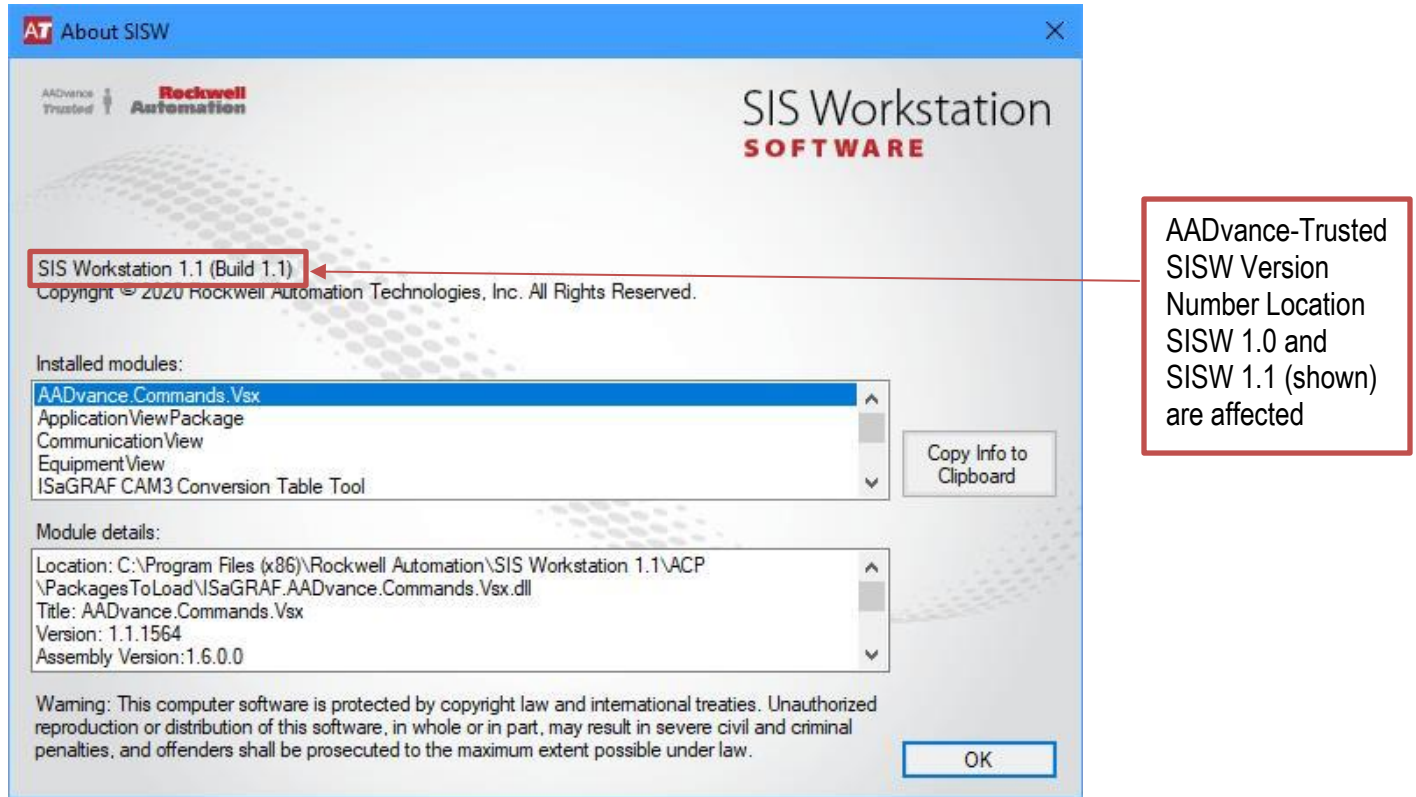
The configured FS\_Value will always be TRUE in the running application, regardless of configured value, when the configured Refresh\_TMO expires (loss of both redundant links).

### **– Product Identification –**

The affected product(s) is T8090 AADvance-Trusted SIS Workstation (SISW) Software, catalog numbers:

- T8090 SIS Workstation 1.0
- T8090 SIS Workstation 1.1

Product version information may be obtained from the SIS Workstation “About SISW” screen.



T8090 AADvance-Trusted SIS Workstation Software “About SISW” screen

– Description –

SISW generates an incorrect application compared to Trusted Toolset. This can be observed for the “FS\_Value” (Fail Safe Value) of the Peer-to-Peer digital input data being set to TRUE regardless of the configured value, on total loss of communications (and Refresh\_TMO expiring).  
[Impacted I/O Boards : dxpdi128 and dxpdi16].

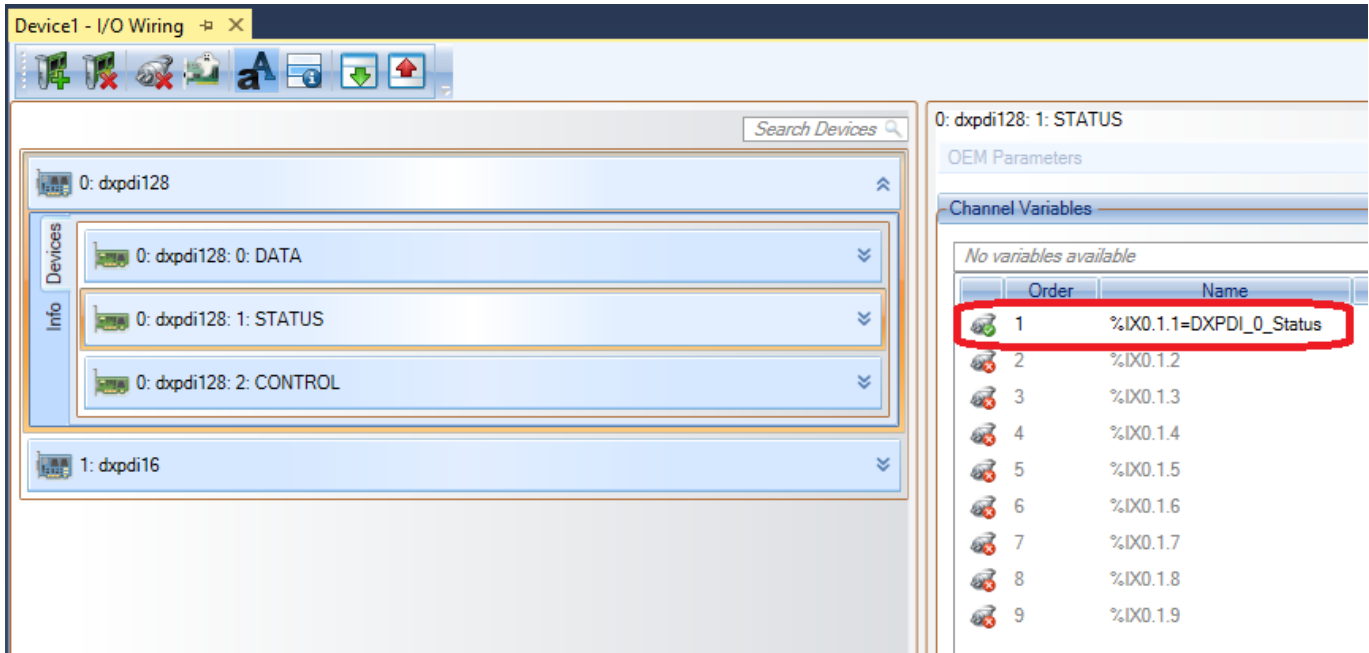
Additional information:

- For an imported Trusted Toolset application, the correct FS\_Value will be used, BUT the incorrect FS\_value will be assumed when ANY change is performed on any boards (instance or configuration) in the 'I/O Wiring' editor.
- The behavior is always present with projects created in SISW 1.0 and SISW 1.1.

– Temporary Workarounds –

If the required FS\_Value is FALSE, then this can be applied at the application level as a temporary workaround.

The dxpdi128/16 status board, variable 1 (shown below) provides the status for the DI data being up to date and valid. If communications fail on both of the redundant communication channels, resulting in the DI data no longer updating, then the Refresh Timer (Refresh\_TMO) starts. If no new data is received before this time expires, this status variable will be set to FALSE (Normally, this would also apply the configured FS\_Value to the DI Data channels).



The transition from TRUE (DI Data being refreshed) to FALSE (No new DI data has been received on either communication channel within the configured Refresh Time) can be used to apply the required fail safe behavior.

**– Correction –**

Correction requires updating product software to a later version. Rockwell Automation is working on a corrected version of software and will release it to the Rockwell Automation Product Compatibility and Download Center (PCDC) in the future. If you would like to receive a notice when this version is released, a link is provided at the end of the Knowledgebase article for this Product Safety Advisory.

Important: Correction requires a customer installed software update that will be available from the PCDC site. Upon installation of the corrected software, the workaround noted above must be removed.

**– Requested Customer Action –**

Rockwell Automation requests you take the following actions:

- Check if you have a product affected by this Product Safety Advisory. Refer to the Product Identification and Description sections of this document for product identification assistance.
- Until corrected software is available and can be downloaded and installed, follow the recommendations in the Temporary Workaround section of this notification. Customers under support contract are automatically eligible for software updates. Customers not under a support contract should contact Rockwell Automation for further instructions.
- If you need additional assistance, please contact Rockwell Automation Technical Support. See Appendix A for local telephone numbers. Customers without TechConnect contracts should reference this Product Safety Advisory when calling.
- Customers with TechConnect contracts may be able to [chat online](#) with support representatives. Reference this Product Safety Advisory when connected to a support engineer.

The most current version of this Product Safety Advisory is posted on the Rockwell Automation Support Center, <https://www.rockwellautomation.com/en-us/support/knowledgebase.html>, as ID number [PN1570](#). Additional languages may also be available at the end of this article attached as downloadable PDF documents.



If this Product Safety Advisory does not affect you because you do not have the products any longer, or if you are a Distributor, Rockwell Automation asks that you forward a copy of this notice, with any identifying documentation, immediately to the person or company that now has the product. We also ask that you contact Rockwell Automation Technical Support and provide the location of the affected units.

We appreciate your immediate cooperation. If you have any questions, please contact us.

Sincerely,

ROCKWELL AUTOMATION

You can register for Automatic Product Safety Advisories and Product Notices from Rockwell Automation by email. Go to the Support web page at <http://www.rockwellautomation.com/support> and click the *Visit the Technical Support Center* link. Sign in with your Tech Connect Account or free Rockwell Automation Member Account and you can subscribe to important product updates, including Product Safety Advisories and Product Notices.

*Trademarks not belonging to Rockwell Automation are property of their respective companies.*